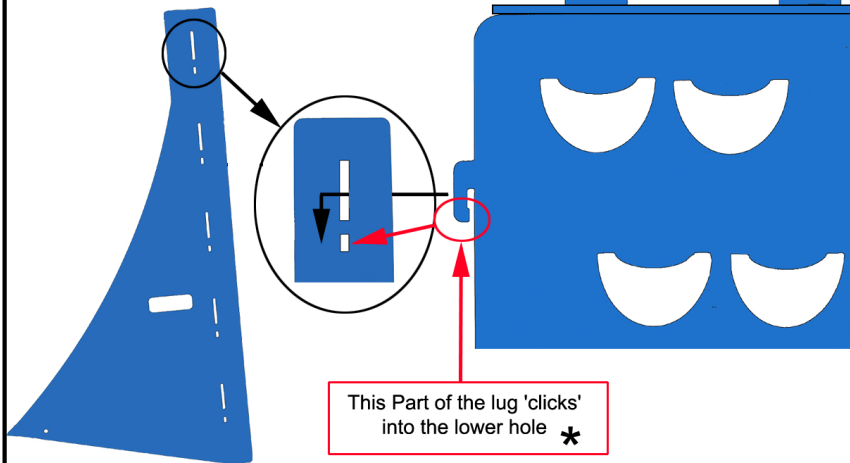


Assembly Instructions

* Hit here with a rubber mallet if necessary



- 1) Attach both side panels placing the five lugs into the holes. Push the centre panels down until they 'Click' into place. Use a mallet if necessary (see above).

New Design
Assemble so the black rails are at the back



Spreader Bar Screw Spreader bar

- 2) Attach the spreader bar by inserting the screws supplied through the hole in the side panel and into the threaded hole at the ends of the bar.

Place something heavy on the bar for extra stability in strong winds